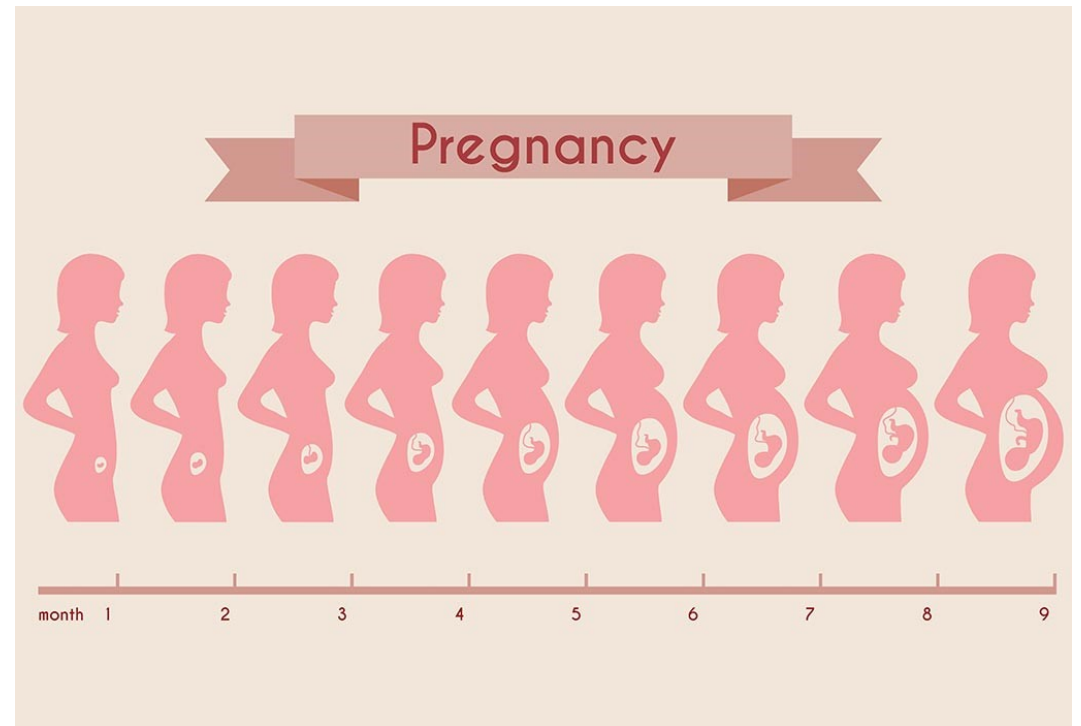
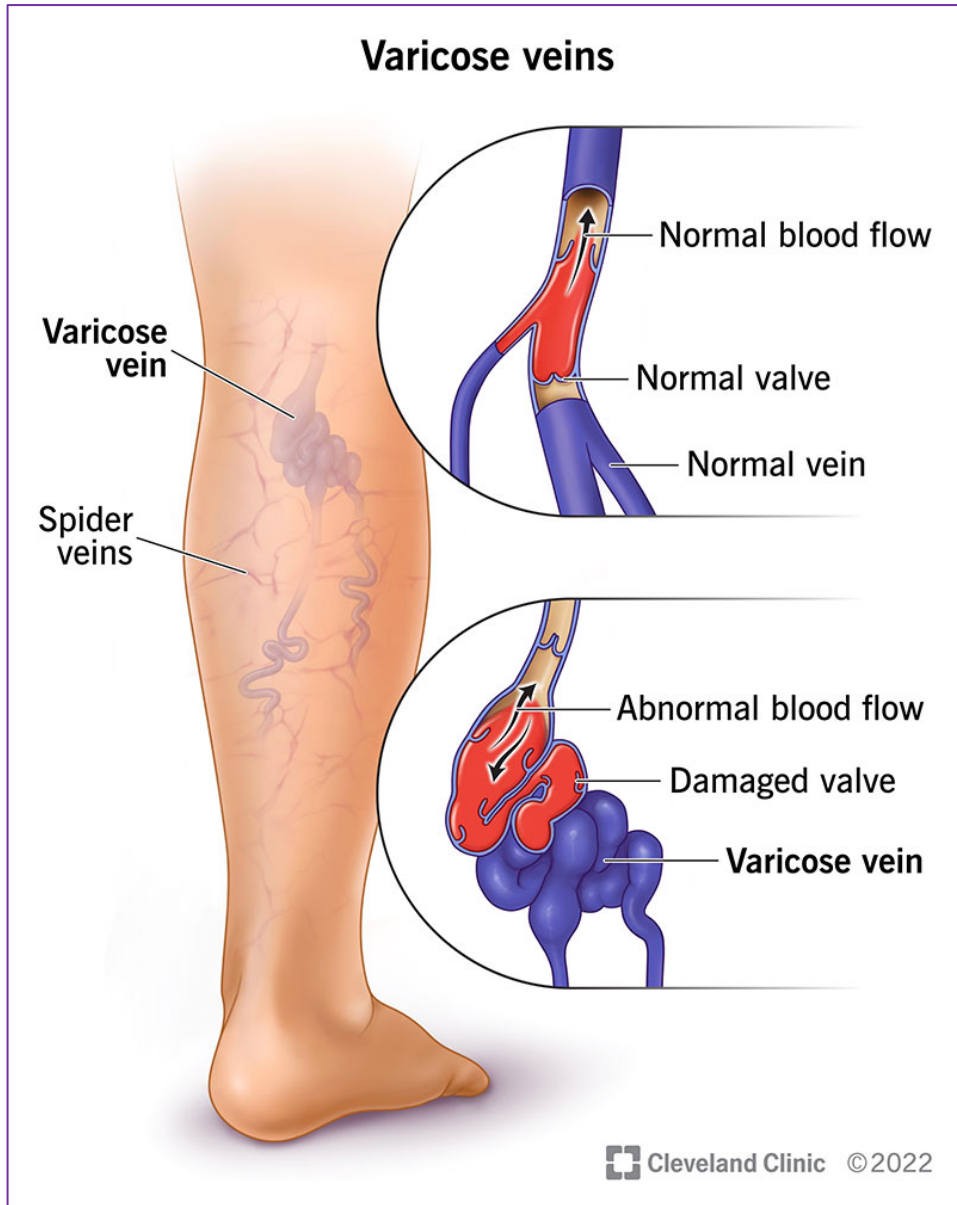


SARCINA: o suprasarcină pentru sistemul venos?



Dr. NATALIA PĂTRAȘCU
Medic primar cardiolog



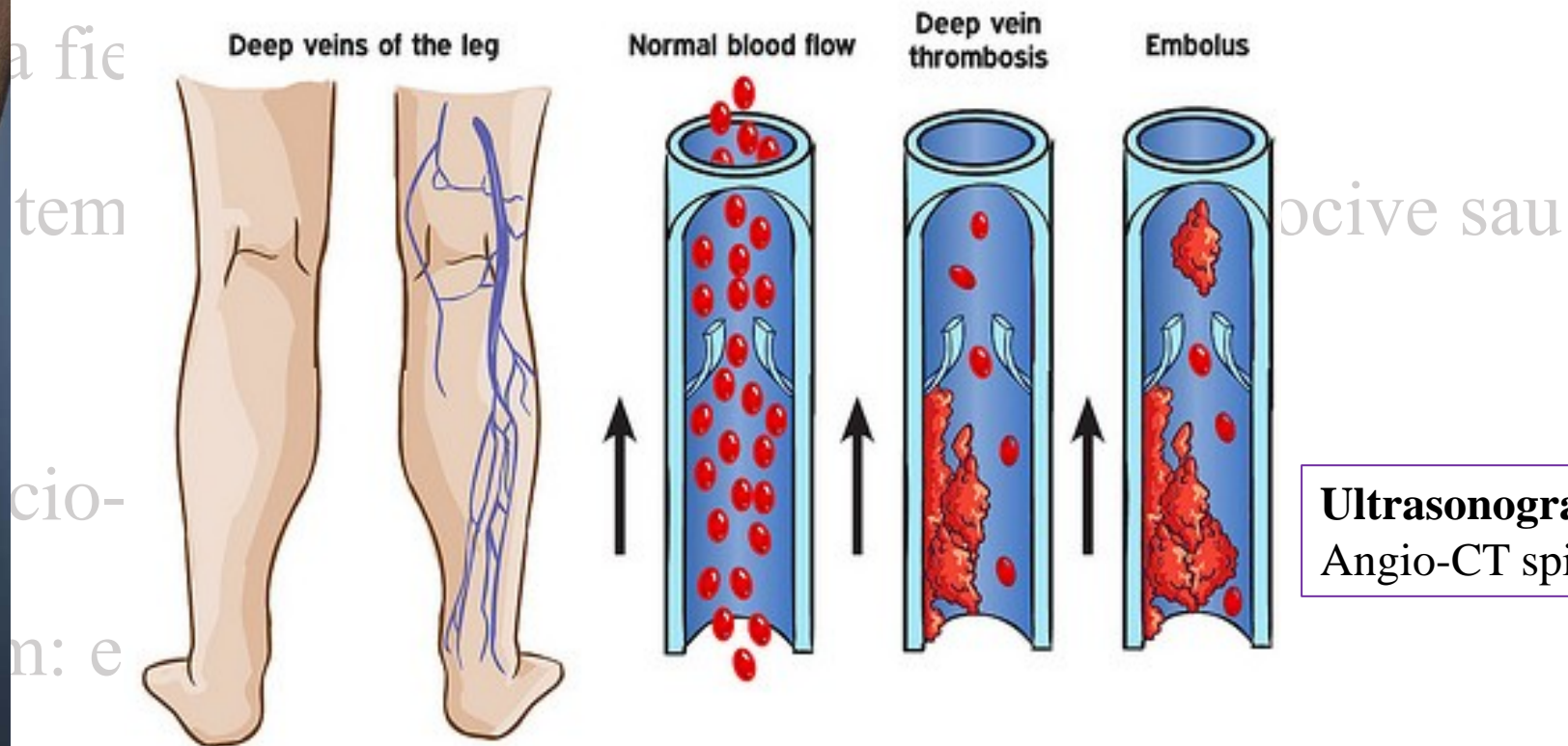
- Pereții vasculari venoși: influența progesteronului
- Fiziologic: volum sangvin, debit și greutate
- Stază: compresia uterină pe vena cavă inferioară
- Hipercoagulabilitate

Provocări speciale în sarcină?

- Risc tromboflebite, tromboze profunde, embolii pulmonare
- Agravarea bolii varicoase la fiecare nouă sarcină
- Limitări și temeri tratament: recomandări corecte, nocive sau inutile!
- Aspecte socio-profesionale: profesii cu risc
- Post-partum: evoluție naturală și soluții

Provocări speciale în sarcină?

- Risc tromboflebite, tromboze profunde, embolii pulmonare



Ultrasonografie Doppler
Angio-CT spiral!?

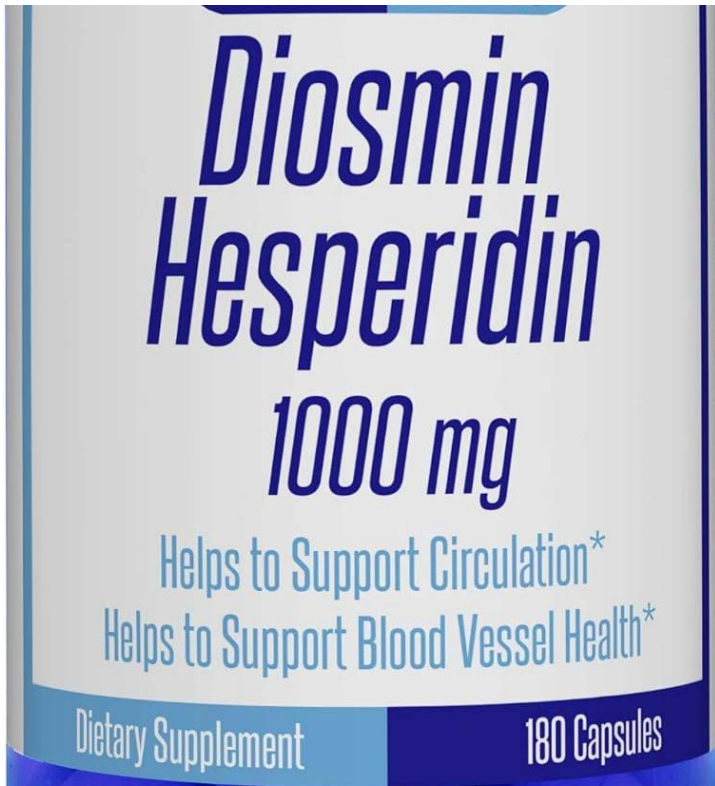
Preexisting condition	Obstetric risk factors	New-onset/transient risk factors
<i>Heritable</i> Antithrombin deficiency Protein C deficiency Protein S deficiency Factor V Leiden Prothrombin gene mutation	Multiple pregnancy Current pre-eclampsia	Any surgical procedure in pregnancy or puerperium except immediate repair of the perineum, eg, appendicectomy, postpartum sterilisation Bone fracture
Acquired Antiphospholipid antibodies Persistent lupus anticoagulant and/or persistent moderate/high titre anticardiolipin antibodies and/or β_2 -glycoprotein 1 antibodies	Cesarean section Prolonged labor (>24 hours) Mid-cavity or rotational operative delivery Stillbirth Preterm birth Postpartum hemorrhage (>1 L/requiring transfusion)	Hyperemesis, dehydration Ovarian hyperstimulation syndrome (first trimester only) Assisted reproductive technology (ART), in vitro fertilization (IVF)
Medical comorbidities eg, cancer, heart failure, inflammatory polyarthropathy, nephrotic syndrome, type I diabetes mellitus with nephropathy, current intravenous drug user		Admission or immobility (≥ 3 days' bed rest), eg, pelvic girdle pain restricting mobility
Age >35 years		Current systemic infection (requiring intravenous antibiotics or admission to hospital)
Obesity (BMI ≥ 30 kg/m²) either prepregnancy or in early pregnancy		eg, pneumonia, pyelonephritis, postpartum wound infection
Parity ≥ 3 (a woman becomes para 3 after her third delivery)		Long-distance travel (>4 hours)
Smoking		

Provocări speciale în sarcină?

- Risc tromboflebite, tromboze profunde, embolii pulmonare
- Agravare la fiecare nouă sarcină
- Limitări și temeri tratament: recomandări corecte, nocive sau inutile! *„stau de prea mult timp acasă...”*
- Aspecte socio-profesionale: profesii cu risc
- Post-partum: evoluție naturală și soluții

Provocări speciale în sarcină?

- Risc tromboflebite, tromboze profunde, embolii pulmonare
- Agravare la fiecare nouă sarcină
- Limitări și temeri tratament: recomandări corecte, nocive sau inutile!
- Aspecte socio-profesionale: profesii cu risc
- Post-partum: evoluție naturală și soluții



Când se stabilește indicația?
Cine decide?

Contraindications/cautions for using low molecular weight heparin

Known bleeding disorder (eg, haemophilia, von Willebrand's disease or acquired coagulopathy)

Active antenatal or postpartum bleeding

Women considered at increased risk of major hemorrhage (eg, placenta praevia)

Thrombocytopenia (platelet count $<75 \times 10^9/L$)











Acute stroke in previous 4 weeks (hemorrhagic or ischemic)

Severe renal disease (glomerular filtration rate $<30 \text{ mL/minute}/1.73\text{m}^2$)

Severe liver disease (prothrombin time above normal range or known varices)

Uncontrolled hypertension (blood pressure $>200 \text{ mm Hg}$ systolic or $>120 \text{ mm Hg}$ diastolic)

mediven elegance

Tipuri		AD	AD pte.	AG	AG pte.	AG/Mfb
						
		până la genunchi	până la genunchi scurt	până la coapsă	până la coapsă scurt	până la coapsă cu bandă de silicon
CCL 1	Cod	0140x11-7	0147x11-7	0160x11-7	0150x11-7	016Hx11-7
CCL 2	Cod	0240x11-7	0247x11-7	0260x11-7	0250x11-7	026Hx11-7
Tipuri		AG pte./Mfb	AT	AT pte.	AT/U	AT/U pte.
						
		până la coapsă scurt cu bandă de silicon	ciorapi pantalon	ciorapi pantalon scurt	ciorapi pantalon pentru gravide	ciorapi pantalon scurt pentru gravide
CCL 1	Cod	015Hx11-7	0110x11-7	0117x11-7	0120x11-7	0127x11-7
CCL 2	Cod	025Hx11-7	0210x11-7	0217x11-7	0220x11-7	0227x11-7

<https://www.sigvaris.com/en-gb/expertise/daily-health/pregnancy>

<https://my.clevelandclinic.org/health/diseases/23331-varicose-veins-in-pregnancy>

<https://www.phlebology.org/prevention-and-treatment-of-venous-disorders-during-pregnancy-and-the-postpartum-period/>

- ✓ Exerciții fizice: cardio, înot, aqua gym!
- ✓ Consum redus de sare
- ✓ Consum crescut lichide și fibre
- ✓ Decubit lateral stâng
- ✓ Fără tocuri!
- ✓ Elevație periodică membre
- ✓ Evitare poziție "picior peste picior"
- ✓ Evitare poziții stagnante îndelungate (avion, mașină!)
- ✓ ***Câștigul ponderal!***



Provocări speciale în sarcină?

- Risc tromboflebite, tromboze profunde, embolii pulmonare
- Agravare la fiecare nouă sarcină
- Limitări și temeri tratament: recomandări corecte, nocive sau inutile!
- Aspecte socio-profesionale: profesii cu risc
- Post-partum: evoluție naturală și soluții

- Lucrat de acasă
- Temperaturi extreme
- Poziții fixe, efort fizic
- Soluții angajator!

Provocări speciale în sarcină?

- Risc tromboflebite, tromboze profunde, embolii pulmonare
- Agravare la fiecare nouă sarcină
- Limitări și temeri tratament: recomandări corecte, nocive sau inutile!
- Aspecte socio-profesionale: profesii cu risc
- Post-partum: evoluție naturală și soluții

- Scleroterapie
- Laser terapie
- Chirurgie vasculară
- Ciorapi compresivi!

https://www.e-lactation.com/en/diosmin-pr/

Is Diosmin compatible with breastfeeding? Do we have alternatives for Diosmin?

! Diosmin

January 7, 2018 (Very Low Risk)

Bioflavonoid like substance.

Flavonoids are phenolic compounds naturally occurring that are abundantly present in plants and seaweed.

We take it from fruits, vegetables, tea and red wine (as a few examples)

Most important types are: anthocyanins, chalcones, flavonols, flavones, flavonoids and tannins. No risk for toxic nor side-effects in humans have been found.

Alternatives

We do not have alternatives for **Diosmin** since it is relatively safe.

https://www.e-lactation.com/en/sulodexide-pr/

Is Sulodexide compatible with breastfeeding? Do we have alternatives for Sulodexide?

! Sulodexide

January 31, 2016 (Low Risk)

Heparin-like glycosaminoglycan which is a mixture of low molecular weight heparin (80%) and dermatan sulfate (20%) that has hypolipemic and antithrombotic properties and used for treatment of venous insufficiency.

It does not have significant effects on coagulation but some protective properties on vascular endothelium is attributed.

At latest update on excretion into breast milk no published data were found.

Pharmacokinetic data (large volume of distribution and high molecular weight) make it unlikely the passage into milk in significant amounts.

Until more published data about this drug regarding breastfeeding is available, a safer alternative should be used, especially during the neonatal period and in case of prematurity.

Alternatives

- Troxerutin (Very Low Risk)
- Heparin (Very Low Risk)
- Ethoxazorutoside (Very Low Risk)
- Hydrosmine (Very Low Risk)
- Rutoside (Very Low Risk)

! Very Low Risk

Compatible. Not risky for breastfeeding or infant.

! Low Risk

Moderately safe. Mild risk possible. Follow up recommended. Read the Comment.

! High Risk

Poorly safe. Evaluate carefully. Use a safer alternative. Read the Comment.

! Very High Risk

Not recommended. Cessation of breastfeeding or alternative.

Morala pentru acasă

- Modificările fiziologice din sarcină: de diferențiat de patologie
- Femeia gravidă: sarcina trece, varicele (\pm) rămân
- Lăuzia: atenție la semne. Nu se țin sub tăcere, nu se rabdă, se cere ajutor!
- Ne e frică să cercetăm/tratăm gravide?
 - DA, sunt "2 în 1" dar cercetarea evoluează!